

next!

4Time WEB

Software in the cloud to control field workers

Use

The platform for the provision of leased technical infrastructure that supports different manufacturers devices used to control the field workers.

Interface

The application is equipped with independent interfaces, tailored to the needs of:

- end customer - direct user of the device,
- security agency - providing the service of protection the end customer,
- distributor - entity sharing technical infrastructure.

Levels of service

- basic - offering the end customer the ability to view and self-control path calibrations,
- expanded - developed to include automatic notification of critical situations in the form of text messages or e-mail,
- additional protection - with retransmission of critical situations to security agencies.

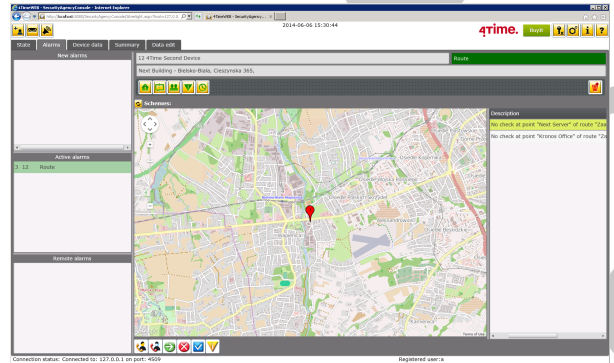
Architecture

- three-layer - secure architecture for easy dispersion applications,
- browser-based access for the end user and security agencies,
- work in the cloud without having to install the application on the client computer stations and in security agency.

Scope of the control

- straight paths - registration of all specific points in any order, but at a fixed time,
- advanced paths - registration of certain points in sequence and in a defined time,
- adhoc paths - the option to run tracks on demand used by mobile guards patrols

- flexible calendars activation pathways (specified date, every working day, every day off, a specified day of the week or month),
- launching paths on the days designated as holidays or normal, active all the time or just in time,
- verification of predefined check point GPS position.



End customer

- the ability to self-register a new device,
- preparing summaries of the history of signals and events,
- edition of data of devices and protected objects to high devices are assigned,
- configuration of simple and advanced paths,
- setting text messages and e-mail notifications as well as summaries sent by e-mail,
- change the level of service (basic, expanded, additional protection),
- preview and save a template agreement with security agency,
- management of user data along with the ability to change your password.

- generation of payment for services provided,
- package of tools supporting system administration.

Further

- agreements distribution between the security agency and end customers,
- text message and e-mail notification about alarms, information and technical signals,
- automatically sending with set frequency, e-mails with the summaries,
- generating and displaying payments for services provided,
- opportunity to provide registration of work time of end customers employees,
- flexibility in the choice of equipment from different manufacturers,
- vector map visualisation of the current and historical device positions,
- geofencing feature.

Security agency

- preview of current signals, events, state of devices connection and active paths,
- alarm handling, also in several positions,
- access only to the assigned equipment and protected objects,
- a number of reports in relation of the equipment, operators, working time of controlled persons and payments,
- edition of subordinate devices and

- protected objects data,
- managing users and their access permissions and passwords,
- edition of agreements with end customers patterns.

Distributor

- sharing of technical infrastructure,
- management of security agencies and end users data as well as devices and protected objects data,
- monitoring the current state of the system,

Requirements

1. Server:

- Operating system: Windows XP, 7, 8, 8.1, Server 2008 (R2), Server 2012,
- database engine: MSDE, SQL Server version 2005, 2008, 2010 or 2012,
- IIS version 5.1, 6.0, 7.0, 7.5 or 8.0,
- .NET Framework 4.0.

2. Work and client stations:

- operating system: Windows XP, 7, 8 or 8.1, MacOS 10.5, 10.6, 10.7, 10.8 or 10.9,
- Internet browser: Internet Explorer, Firefox, Chrome lub Safari in versions compatible with SliverLight 5 runtime environment.

